

DOMINIC WELSH
(1938–2023)

GEOFFREY R. GRIMMETT

ABSTRACT. This biographical and scientific memoir of Dominic Welsh includes summaries of his important contributions to probability and combinatorics. With John Hammersley, he introduced first-passage percolation, and in so doing they formulated and proved the first subadditive ergodic theorem. Welsh has numerous results in matroid theory, and wrote the first monograph on the topic. He worked on computational complexity and particularly the complexity of computing the Tutte polynomial. He was an inspirational teacher and advisor who helped to develop a community of scholars in combinatorics.



If the principal qualities of an academic are associated with teaching, research, and collegiality, Dominic Welsh was an outstanding example to all. He combined excellence as tutor and supervisor over nearly 40 years with a distinguished research record in probability and discrete mathematics, while creating a community of younger people who remember him with love and respect.

Date: April 21, 2024.

1. EARLY LIFE

James Anthony Dominic Welsh was born on 29 August 1938 in Port Talbot, the eldest of four children of parents Teresa O’Callaghan and James Welsh. They addressed him as Dominic, and it was thus that he became known to all.

Dominic was born into an extended family of Irish Catholic origins living in and around Swansea. Numerous members of the family including both his parents were teachers, and his father was Headmaster of St David’s School, Swansea¹. Education was naturally considered a priority for their four children, though teaching was not the only profession of the family; one of Dominic’s grandfathers worked at the Port Talbot steelworks, and his uncle Jim (Bennett), a Dubliner by origin, was the brewer at the historic Buckley’s Brewery in Llanelli. All four of Teresa and James’s children followed their parents’ example in one way or another. Their second son, David (b. 1939), studied in London and Oxford, and became Professor of Classics at the University of Ottawa; Mary (b. 1942) studied in Swansea, became a teacher, and moved to Japan before starting a successful EFL (English as a Foreign Language) business; Teresa (b. 1952) graduated with a first-class degree in mathematics at Swansea, and remained in Port Talbot as a teacher and later a school governor.

Dominic’s earliest memories were of the convivial home of his (maternal) Gran in Castle Street, Port Talbot, where his aunt May married Jim Bennett to an accompaniment of Irish dancing, music, and songs. With the start of war, his father’s school was evacuated from Swansea, and the family moved with the newly born Dave to Ammanford. Later he returned to Port Talbot, where he lived until a bombing raid struck a nearby house.

As a child Dominic developed a talent for rugby; a love of sports, games, and other competitive activities stayed with him throughout his life. He played for the Glamorgan and District Schoolboys Team against London at Twickenham in 1957, capitalising on this highlight by scoring a try between the famous posts. He was invited to trial for the Wales Under-18 XV, but was disappointed to be disqualified as being three days too old for inclusion in the team. And in any case he was discouraged by the line of dentures hanging on hooks in the changing room.

For his secondary education, Dominic attended Bishop Gore Grammar School, where in due course he became Head Boy. His mathematical abilities were evidently exceptional, and he was the first boy ever to move from the school to Oxford University. Indeed he was offered places at both Oxford and Cambridge, but the latter would have required him to first spend two years in National Service.

¹St David’s Roman Catholic School is said to have been built to “save the Irish and Belgian children of the district from the risk of being brought up in ignorance of their religion, if not losing it altogether”, [2].

2. OXFORD AND MERTON

Dominic went up in 1957 to read Mathematics at Merton College, Oxford, where he was awarded a scholarship (an Exhibition). The College became his intellectual home for evermore. Following his BA in 1960, he visited North America for the first time with a Fulbright award to Carnegie Mellon University, and thence to Bell Telephone Laboratories in Murray Hill. He returned to Oxford in 1961 as a postgraduate, and was awarded a NATO studentship in 1962. He took his D.Phil. in 1964 under John Hammersley, was appointed Junior Lecturer in the Mathematical Institute in 1963, and was elected to a Tutorship and Fellowship at Merton in 1966. Within the University, he was promoted to a Readership in 1990 and a personal Chair in 1992, while retaining his Fellowship at Merton. He attained the retirement age of 67 in 2005 becoming Emeritus Fellow and Professor. He died in Oxford on 30 November 2023 after a period of illness. His funeral and Requiem Mass took place in the College Chapel on 16 December 2023, followed on 1 June 2024 by a memorial service.

His 39 years as a Fellow have been exceeded by only few in recent times, including by his colleague Philip Watson (Fellow, 1950–1993), with whom Dominic shared the privilege of teaching and advising the many mathematics undergraduates at the College during their years in common. No one has contributed more than Dominic to the marked rise in reputation of the College in mathematics over the last 60 years.

Quite apart from his family life (see Section 3), Dominic was a very busy person indeed. As a so-called CUF lecturer, he had a tutorial load of 12 hours per week, plus a lesser lecturing load. Administration had a lighter touch in the 1960s and '70s than now, but Dominic was never a shirker and he undertook his share of duties, including the College-appointed posts of Principal of the Postmasters [PoP] (1970–73), Pro-Proctor (1979–80), Sub-Warden (1982–84), and Wine Steward (1998–2002).

Within the University, he served as Chair of the Faculty (1976–78), of the Board of Mathematical Sciences (1984–86), and of the Mathematical Institute (1996–2001). His term as Institute Chair was eminently successful, though he was sometimes uncomfortable with the degree of influence and control available to him in the role.

Dominic was elected to the London Mathematical Society in 1969, and served as Publications Secretary and Member of Council for 1972–1976. He was a member of the editorial boards of numerous leading journals, and was a popular lecturer at international conferences and workshops.

Dominic's strong sense of responsibility was invariably leavened with humour and good sense, and his deepest loves were people and research. He was very good with young people, and he developed a rare and enviable affinity with many of his undergraduate and postgraduate students.

Dominic was an academic of a now rare breed. He was devoted and generous to his students, and he welcomed them into his home and family for nourishment, conversation, and other (usually competitive) activities. He taught up to 15 hours per week during term, and covered a wide range of subjects including the entire first- and second-year syllabuses. He was active over more than 50 years at a high level in mathematical research; he supervised 28 D.Phil. students, and he wrote numerous research papers and books with more than 50 collaborators. He undertook a full load of administration in the College and University. All this he achieved with charm and diligence.

Following his retirement from Oxford, Dominic and Bridget went on tour, living (recalls Bridget) out of seven suitcases for two years. They travelled first to New Zealand for a three-month visit to the University of Canterbury, and then to Bath for six weeks at the beginning of an association with the Heilbronn Institute in Bristol that was to last until 2012. They particularly enjoyed their year in Barcelona where Dominic was visiting the Technical University. On 17 August 2007 they had their first experience of owner-occupancy on moving into their new home in Charlbury Road.

3. FAMILY LIFE

Dominic and Bridget met on Dominic's 24th birthday in 1962. It was a *coup de foudre*. They married on 10 July 1965 and made their first home together in a Woodstock cottage backing onto the Blenheim Estate. Their three sons arrived in arithmetic progression: James (b. 1967), Simon (b. 1969), John (b. 1971). The family came to know many of Dominic's students, initially through child-sitting, and progressing to other activities.

Dominic's family has written (in [4]): 'Many of his colleagues and students went on to be lifelong friends. Dominic and Bridget would host long laughter-filled Sunday lunches, first at their college home in Kybald Street then later in Rose Lane, where future mathematical geniuses would sit side by side with a trio of grubby-faced mischievous kids.' [Some readers may cavil at the word 'future'.]

Two aspects of Dominic's personality merit mention. He was born into a Catholic family and was committed to Roman Catholicism throughout his life. He was guided by his religion in moral matters, but without judgement of others. He attended the Catholic Chaplaincy regularly before moving to the Oxford Oratory.

Secondly, he was an avid and competitive sports and games player. Dinner would often be followed by a game, usually designed with children in mind but played with the seriousness of a rugby final at Cardiff Arms Park.

David Stirzaker has written: 'Dominic's pastoral care of students extended to playing both tennis and real tennis with them on the Merton courts. He was fond of describing real tennis as 'chess on the run', ... or was it 'chess on wheels', I forget. He enjoyed beating me at lawn tennis. He used to invite students round to his house to play group board games. I remember enjoying

some very competitive sessions of Diplomacy in the 1960s, which revealed a rich vein of deviousness and cunning in his character. Students and colleagues were invited to watch rugby with him. I well recall being at his house in Kybald St to see the Barbarians beat New Zealand in 1973. His joy at Gareth Edwards’ try was very infectious.² [His family considered him a good loser but a horrible winner.]

Disaster struck in 1990 when John drowned in an accident in Brisbane. To quote again from the Welsh family: ‘They were happy times, but no life is without pain. And in 1990, Dominic and Bridget suffered the worst pain imaginable, when their beloved eighteen-year-old son, John, died while travelling in Australia. No one ever fully recovers from the loss of a child, but eventually Dominic and Bridget somehow found the strength to keep on living, loving and laughing.’

In later life, Bridget and Dominic travelled the world together and enjoyed walking holidays.

4. TRIBUTES, REMINISCENCES

Adrian Bondy has written: ‘As my doctoral supervisor, Dominic proposed to me a good number of thesis topics. I worked on matroids for a while, coming up with a variety of matroids based on graphs (which all turned out to be derivable from graphic matroids by simple operations). Finally, I latched onto the reconstruction problem, which remains unsettled.

Dominic was always bubbling over with ideas. His enthusiasm was contagious. Just a few years my senior, he was friendly and approachable, and I came to know him and his family quite well. It was an ideal environment for a research student.’

James Oxley has written: ‘Dominic modelled for me not only how to do research but also how to bring out the best in students. The first time I met him was in the Porters’ Lodge at Merton College just after I had arrived in Oxford. Seeing him there, I tentatively approached him with “Dr Welsh?” “Dominic” was his immediate response, quickly followed by an invitation to afternoon tea with his family. His friendly, welcoming, and informal manner made interacting with him great fun.

Dominic’s generosity of spirit shone through in our exchanges. After each of us had published books on matroid theory, he apologised to me because he was worried that the 2010 Dover reprint of his 1976 book may hurt the sales of my book. Both Dominic’s sage guidance and our deep and enduring friendship enriched my life immensely.’

Andrew Wiles has written: ‘I first met Dominic at my undergraduate interview in Merton. I don’t remember much of it except for his genuine warmth. He asked me at one point to explain epsilon/delta arguments and I thought

²David Williams is quoted in [3] as saying “[Maths is] like watching the famous match between the Barbarians and the All Blacks. Everyone who saw that game was carried away with the excitement. But it does not compare with the excitement of mathematics.”

of making a stab at it, but decided it was better not to make a hash of it. In truth I had really never learned it. So after a thirty second silence I just said that I don't know and he brushed over it and put me at my ease. It was the same when I was his student in the first year. He accepted that I had strong tastes in mathematics and did not complain that my performance was much better in some areas than in others.

For the rest of his life he and Bridget would always welcome me back to Oxford in the summers and especially in the year 1988–90. When I finally moved back for good in 2011 I moved into what had been his office and the memories of earlier visits came back with it. Not everything in the all male Merton world of my undergraduate days would I wish to remember but Dominic's presence was certainly the best part of it and I will always cherish his friendship and kindness then and afterwards.'

Neil Loden has written: 'I was sad to learn of the death of Dominic Welsh whom I remember fondly in his role as the PoP. After a particularly debauched dinner of the 1311 Club in 1969, Alan [Harland], Chris [Hewitt] and I blocked up the door into his rooms by building a wall of bricks (taken from the works going on in Front Quad) from floor to ceiling, which kept him out of his room for the whole of the next morning, while we were nowhere to be seen, being still in bed nursing hangovers. We thought at the time that it was very funny, and even he didn't seem to mind unduly.'

David Stirzaker has written: 'Dominic's pupils generally found him to be one of the most engaging and entertaining of all their lecturers. More than other lecturers, he conveyed the impression that he was enjoying it and found it fun to be talking to us. I recall him remarking of some theorem that, as it stood, it was so hedged about with technical conditions and restrictions as to be about as useful as a barren pear tree. This was quite refreshing after the arid dustiness of many Oxford lectures. He was even more outstanding as a tutor, because he had the twin gifts of seeing precisely where the student's problem with understanding lay, and being able to supply the insight necessary to overcome the difficulty.'

Steve Noble has written: 'In the 1990s the combinatorial group in Oxford was much smaller than now, comprising mainly Dominic and Colin McDiarmid and their graduate students. The Combinatorial Theory seminar was the main event of the week. We were fortunate to hear eminent speakers talking about topics relevant to our problems. But as we knew very little, much of what we listened to was largely incomprehensible. I was reassured when Dominic, with characteristic modesty, told me that he didn't understand much of a particularly lengthy and difficult proof. The highlight of the seminar was the discussion afterwards, when Dominic would interrogate the speaker in a jovial but probing way. A speaker was never allowed to get away with a vague claim, and Dominic was never afraid to ask a question. Some of his questions were deep, and some less so, but there was an important third category that sounded silly at first but somehow pointed to the nub of a topic in a way which no one else had considered, often suggesting connections between apparently

unrelated areas. I assumed that it was always like this, but I have never come across anyone who could do whatever it was Dominic did to make the discussion so lively and informative. I learnt a huge amount from Dominic, much of it from these informal discussions.’

Colin McDiarmid has written: ‘Before I came to Oxford to start graduate work I had certainly enjoyed mathematics, but with Dominic as supervisor the game changed. Mathematics became very exciting, with a playful side, something to share. From the beginning Dominic and Bridget made me feel very much at home in Merton and in Oxford.’

In my first meeting with Dominic we walked in Christ Church Meadows in sight of Merton; he often told the story that my first question was not about mathematics or ‘where is the Merton library?’ but ‘where are the Merton rugby pitches?’. He was a great story teller, always with a smile and a laugh. Another early meeting was at Blenheim, with fellow new graduate Frank Dunstan . . . and a frisbee. Often we would meet at his home, with family around. More happy memories are at workshops or conferences where it was always so full of life around Dominic. He was a great supervisor, certainly my model. Before long he was a good friend as well as a mentor, then a much respected and loved colleague, and now much missed.’

5. WORK AND INFLUENCE

It may be said that Dominic’s mathematical trajectory was influenced most by John Hammersley and Bill Tutte — the former imparted a love of problems associated with counting and chance, and the work of the latter was foundational to Dominic’s interests in combinatorics. The human angle of mathematics as a participatory activity played a key role for him. He thrived off discussions with colleagues, usually (ex)-students, throwing ideas and often wild questions around, possibly over tea in his home or in the Oxford Mathematical Institute. One thing would lead to another, and papers, books, and dinners flowed, usually in the company of members of the community that circulated around and were inspired by such meetings.

The 1960s and ’70s were a glorious period for combinatorial theory, with Dominic active at the heart of the development in the UK. He organised and edited the proceedings of the 1969 Oxford Conference that came to be viewed as the First British Combinatorial Conference (BCC); the list of 35 speakers included Paul Erdős, Richard Guy, Mark Kac, and Roger Penrose. This gave birth to the continuing series of BCC meetings ([8]) and later the British Combinatorial Committee of which Dominic was the Chair for the period 1983–1987.

The remainder of this memoir is a brief overview of Dominic’s contributions to probability and combinatorics. Section 6 is centred around his work on percolation and self-avoiding walk, largely done as a D.Phil. student; the results summarised there have had great impact over the intervening 60 years.

Sections 7 and 8 are directed towards his work, as an individual and often jointly with his students, on matroids and complexity.

Dominic began taking postgraduate students very soon after his own doctoral graduation, beginning with Adrian Bondy who graduated in 1969. On his academic family tree [49] are listed 28 students, with 235 scientific offspring in all at the time of this memoir. *Graham Farr, Dillon Mayhew, and James Oxley* have written in [15]: ‘Dominic was a very effective supervisor of research students. [...] He was flexible in his approach and adept at finding a productive mix of patience, firmness, encouragement, plain speaking, and inspiration. [...] Time and again he brought out the best [...], inspiring enduring appreciation and affection.’

In his books, Dominic achieved a high level of communication (and excellent Amazon reviews) through clear exposition and a minimum of mathematical prerequisites. In addition to his more elementary volume [19] on probability (which, wrote one eminent reviewer, reads as though it was written in a punt), he wrote more advanced texts on *Matroid Theory* [44], *Codes and Cryptography* [45], *Complexity: Knots, Colourings and Counting* [46], and *Complexity and Cryptography* (with John Talbot) [41].

Dominic’s friends and colleagues marked his retirement from Oxford in 2005 by the publication of the collection [18] of articles on topics close to his heart. Moreover, he was awarded in 2006 the degree of Doctor of Mathematics, *honoris causa*, at the University of Waterloo in recognition of his work in combinatorial mathematics. A full list of Dominic Welsh’s publications is available at [1].

6. PERCOLATION AND SELF-AVOIDING WALKS

Dominic’s D.Phil. supervisor, John Hammersley, was a pioneering mathematician who contributed some of the very best early work on important topics including self-avoiding walks and percolation. Each of their two joint papers has had substantial impact on fields that have grown enormously in visibility over the decades.

6.1. First-passage percolation. Percolation is the canonical model for a random spatial medium. It is usually viewed as a *static* model in the sense that there is no dependence on time and no evolutionary aspect. The *first-passage percolation* process, introduced by Hammersley and Welsh in [21] in 1965, includes a time variable, and thus leads to beautiful questions involving growing random sets and their asymptotic behaviour. This work formed the core of Dominic’s D.Phil thesis [43], and has had great influence over the intervening 60 years on the theory of random spatial growth.

Amongst the major advances of this work is the introduction of the concept of a *subadditive* stochastic process, that is, a stationary family $(X_{s,t} : 0 \leq s < t < \infty)$ of random variables satisfying subadditivity: for $s < u < t$, we have $X_{s,t} \leq X_{s,u} + X_{u,t}$. The authors proved an early version of the now famous subadditive ergodic theorem, which states that, subject to a suitable moment

condition, the limit $\lim_{t \rightarrow \infty} X_{0,t}/t$ exists. This theorem has been improved and optimised in various ways since 1964 by Kingman [26, 27], Liggett [30], and others; Kesten and Hammersley weakened the subadditive condition to a distributional assumption, and so on. The subadditive ergodic theorem is now one of the major tools of probability theory.

6.2. Self-avoiding walks. A *self-avoiding walk* (SAW) on a graph G is a path that visits no vertex twice or more. The basic SAW problem is to estimate the number $\sigma_n(G)$ of distinct n -step SAWs starting at a given vertex. This problem is fundamental to the theory of polymers as studied by Flory and co-workers, [16]. For concreteness (and a reason that will soon be clear), let G be the hexagonal lattice, denoted \mathbb{H} . It is now standard that σ_n is a (deterministic) subadditive sequence in that $\sigma_{m+n} \leq \sigma_m + \sigma_n$, and it follows immediately that the limit $\kappa = \lim_{n \rightarrow \infty} \sigma_n^{1/n}$ exists. The constant $\kappa = \kappa(\mathbb{H})$ is called the *connective constant* of \mathbb{H} , and one has by subadditivity that $\sigma_n \geq \kappa^n$. In [20], Hammersley and Welsh sought upper bounds for σ_n , and were able to prove that there exists γ such that $\sigma_n \leq \kappa^n \gamma^{\sqrt{n}}$. This they achieved by showing that a SAW can be decomposed as a union of so-called bridges, and by observing that counts of bridges are superadditive rather than subadditive. (Actually they worked with the d -dimensional cubic lattice, but their argument is largely valid in greater generality.)

Two observations are made about the impact of this work. Firstly, it is believed (but not yet proved) that the true correction term in the two-dimensional case is a power of n rather than an exponential of \sqrt{n} . More precisely, it is believed, for a d -dimensional lattice \mathcal{L} , that there exist constants $A = A_d$ and $\gamma = \gamma_d$ such that

$$(6.1) \quad \sigma_n \sim An^{\gamma-1} \kappa(\mathcal{L})^n,$$

(subject to a logarithmic correction when $d = 4$) and moreover $\gamma_2 = \frac{43}{32}$. Equation (6.1) was proved in 1992 by Hara and Slade for the cubic lattice in 5 and more dimensions, in which case we have $\gamma = 1$ (see [31]). The case of two dimensions seems especially hard, and the best rigorous work so far appears to be that of [11] where the $\gamma^{\sqrt{n}}$ is replaced by $\gamma^{n^{\frac{1}{2}-\epsilon}}$ for some $\epsilon > 0$. The full picture in two dimensions may emerge only when we have a proper understanding of the relationship between SAWs and the stochastic Loewner evolution process $\text{SLE}_{8/3}$.

Returning to the case of the hexagonal lattice \mathbb{H} , the biggest result on SAWs in recent years is the exact calculation of $\kappa(\mathbb{H})$ by Duminil-Copin and Smirnov [12], namely $\kappa(\mathbb{H}) = \sqrt{2 + \sqrt{2}}$, as conjectured by Nienhuis using conformal field theory. The proof is a combination of a deeply original argument combined (in its ‘easier’ part) with the bridge arguments of Hammersley and Welsh [20].

6.3. Russo–Seymour–Welsh theory for percolation. Dominic loved problems, and one of his favourites in the 1970s was to prove that the critical probability of bond percolation on the square lattice \mathbb{Z}^2 equals $\frac{1}{2}$. This captivating and beautiful conjecture seemed to defy all attempts. Dominic and Paul Seymour constructed a new tool now named the RSW lemma after Russo [39] and Seymour–Welsh [40].

Bond percolation on \mathbb{Z}^2 is given as follows. Let $0 < p < 1$, and declare each edge of \mathbb{Z}^2 *open* with probability p and *closed* otherwise (with independence between edges). Let $\theta(p)$ be the probability that the origin lies in an infinite open component, and define the *critical probability* $p_c = \sup\{p : \theta(p) = 0\}$. Hammersley conjectured that $p_c = \frac{1}{2}$, and Ted Harris [22] proved that $p_c \geq \frac{1}{2}$. The conjecture is supported by a symmetry between open edges of \mathbb{Z}^2 and closed edges of its dual graph.

Dominic’s idea was to study what he called ‘sponge percolation’, by which he meant the probability $\pi_p(m, n)$ that an $m \times n$ rectangle is crossed from left to right by an open path. Together with Seymour, he proved by a complicated geometrical and probabilistic construction that there exists a continuous function $f : (0, 1) \rightarrow (0, 1)$ such that $\pi_p(4m, 2m) \geq f(\pi_p(2m, 2m))$ for all m . This can be read as saying that, if there is a decent probability of a crossing of a square, then there is a decent probability of a crossing of a rectangle. This in turn implies a lower bound for the probabilities of still longer paths and cycles.

This RSW lemma is one of the fundamental tools of percolation and related topics (see [29] for a recent result of RSW type). It is the basic tool used by Harry Kesten in his celebrated proof that indeed $p_c(\mathbb{Z}^2) = \frac{1}{2}$, [25].

7. MATROID THEORY

A systematic study of the concept of linear independence was pursued in the 1930s through the work of van den Waerden, Whitney, and others, and it was Whitney who coined the word ‘matroid’ in his fundamental paper [48]. Matroids attracted the attention of Tutte, Rado, and others in the 1950s, and their study grew gradually within the combinatorial community. They have gained greater prominence in recent years, with connections to a number of fields beyond combinatorics including topology, geometric model theory, non-commutative geometry, and more recently algebraic geometry.

Dominic’s interests in combinatorics were broad, with matroids as a principal theme. He was brought to matroids by a “stimulating seminar on the applications of matroids” by Crispin Nash-Williams in 1966 (see [44, p. v]). He played a major role in the systematisation of matroid theory and its associations over the next decade. He enriched the field with numerous theorems and conjectures, and the latter have often proved fruitful. He wrote 31 papers between 1967 and 2013 with the word ‘matroid’ in the title, in addition to his monograph *Matroid Theory* of 1976.

In some of his earlier papers, Dominic pursued results inspired by graph theory; he extended to matroids Kruskal’s greedy algorithm for constructing a minimal spanning tree in a weighted graph (this result is ascribed in [37] to a pioneering paper of Borůvka from 1926 written in Czech, see [36]); he proved a version of Euler’s theorem for binary matroids. He worked also on transversal theory; he investigated the relationship between Hall’s marriage theorem and Rado’s condition for the existence of a transversal; with Joan de Sousa he proved that every binary transversal matroid is graphic. He advanced a number of other problems, including the representability of matroids, and their relationship to block designs.

Enumeration provided another theme of study, beginning in 1969 with a constructive proof of Crapo’s lower bound on the number $g(n)$ of matroids on a set of n elements. With Michael Piff, he followed this by improving the lower bound to $\log_2 g(n) \geq 2^n n^{-\frac{5}{2}} \log_2 n$ for large n . Knuth later [28] replaced $\frac{5}{2}$ by $\frac{3}{2}$ by showing that $\log_2(n! g(n)) \geq \binom{n}{n/2}/(2n)$, and it turns out that this bound is, in a sense, not too far from the correct asymptotics for $g(n)$ (see [7]).

A significant number of counting problems rotate around the related concepts of unimodality and log-concavity. A real sequence $(w_i : 1 \leq i \leq n)$ is *unimodal* if there exists k such that $w_1 \leq w_2 \leq \dots \leq w_{k-1} \leq w_k \geq w_{k+1} \geq \dots \geq w_n$, and *log-concave* if $w_i^2 \geq w_{i-1}w_{i+1}$ for all i . Dominic asked whether (i) the number $f_i(n)$ of rank- i non-isomorphic matroids on an n -set constitutes a unimodal sequence, and (ii) the number i_k of k -element independent sets of a matroid is unimodal. A conjecture of unimodality may be extended to a stronger (for positive terms) conjecture of log-concavity ([33]).

A further question is concerned with the coefficients of the characteristic polynomial of a matroid M on the set E ,

$$\chi_M(\lambda) = \sum_{I \subseteq E} (-1)^{|I|} \lambda^{r(E)-r(I)},$$

where r denotes rank; this may be viewed as the matroid version of the chromatic polynomial of a graph. Excepting trivial cases, the coefficients of this power series oscillate in sign. True to form, in [44, Exerc. 15.3.5] Dominic invited the reader to prove the log-concavity of the sequence of these coefficients (earlier related conjectures are due to Gian-Carlo Rota and Dominic’s student Andrew Heron); this exercise is marked delicately with a small ‘o’ to indicate an open problem. Forty years on, this, and the above log-concavity of the counts of independent sets, were proved by Adaprasito, Huh, and Katz [5] in the third of a series of related works by June Huh and his co-authors. Their proof is based on a novel Hodge theory for matroids. The reader is referred to [38, Sec. 15.2] for an account of three log-concavity conjectures for matroids, and to [24] for an overview of the work of [5] and its precursors.

Fuller accounts of Dominic’s work on matroids are found in [15] and [37].

8. COMPLEXITY THEORY

8.1. Computational complexity. Students of Hammersley tended to have computational tendencies, and Dominic was no exception. His time at Bell Laboratories was influential, and he soon developed his own ideas for computational methods. His work as a D.Phil. student inspired two letters about PERT networks to the editor of *Operations Research*, and he followed this with Martin Powell in proposing the so-called Welsh–Powell algorithm [47] for colouring a graph. This is a sequential colouring algorithm: first list the vertices in decreasing order of degree; then construct greedily an independent set containing the first vertex, and colour this set with the first colour; iterate.

Dominic’s interests in complexity developed in the 1980s, inspired in part by the volume [17] of Garey and Johnson. He wrote a number of influential review articles, and encouraged his students to work on the classification of graph-theoretic complexity problems such as thickness and colouring. The following extract from the MathSciNet review of his survey [32] with his student Tony Mansfield might be written equally about any of his expository work: ‘The paper is well written and is eminently readable. [...] The authors have artfully employed the best of both intuition and formalism to achieve succinctness and clarity.’

8.2. Tutte polynomials. Bill Tutte introduced his eponymous polynomial in 1947 (see [14]); its prominence has since grown vastly (see [13]).

The Tutte polynomial of a finite graph $G = (V, E)$ is given by

$$T_G(x, y) = \sum_{A \subseteq E} (x - 1)^{r(E) - r(A)} (y - 1)^{|A| - r(A)},$$

where r denotes rank. The study of such polynomials is now a major part of graph (and matroid) theory. By choosing $(x, y) \in \mathbb{C}^2$ suitably, one obtains counts of important features of G such as spanning trees and forests. In addition, T_G includes the chromatic, flow, and knot polynomials as well as the Whitney rank generating function and the random-cluster/Potts partition functions.

Dominic devoted much of his later years to studying Tutte polynomials. In an important article [23], written with Jaeger and Vertigan, he initiated a systematic study of the complexity of calculating $T_G(x, y)$ for certain classes of graph G and for different values of $(x, y) \in \mathbb{C}^2$ (his book [46] has been influential in this field). Let R be the set of red points of Figure 8.1 (for simplicity, we consider only the real case $(x, y) \in \mathbb{R}^2$). They proved that $T_G(x, y)$ is computable in polynomial time for $(x, y) \in R$, whereas its computation is #P-hard on $\mathbb{R}^2 \setminus R$.

Moreover, for *planar* graphs, T_G may be computed in polynomial time on the hyperbola H_2 of Figure 8.1; this follows by the classic representation by Kasteleyn and Fisher of the Ising partition function in terms of dimer configurations (also known as complete matchings).

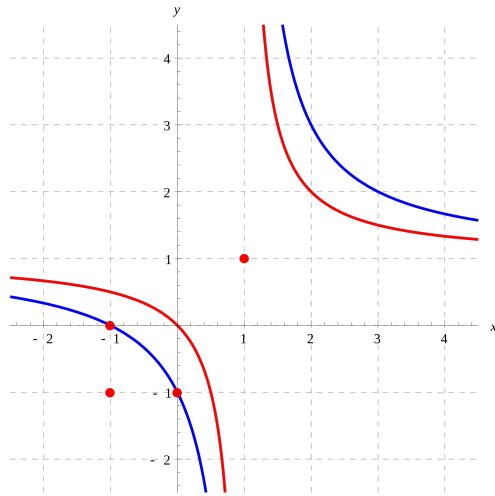


FIGURE 8.1. The real parameter plane \mathbb{R}^2 of the Tutte polynomial T_G . The red hyperbola H_1 is given by $(x-1)(y-1) = 1$. The blue hyperbola H_2 , $(x-1)(y-1) = 2$, corresponds to the partition function of the Ising model on G (when planar). This was probably Dominic’s favourite figure during the 1990s.

This work was the first of a series of papers by Dominic’s students and others on the complexity of the Tutte polynomial and its cousins. In addition, it led to extensions of the work to matroids, and also to the problem of approximating Tutte polynomials.

A *fully polynomial randomised approximation scheme* (FPRAS) for a function $f(x)$ is a randomised algorithm that, for all $\epsilon > 0$ and all instances x , outputs a random value $\hat{f}(x, \epsilon)$ satisfying

$$\mathbb{P}(\hat{f}(x, \epsilon)/f(x) \in (1 - \epsilon, 1 + \epsilon)) \geq \frac{3}{4},$$

and that runs in time polynomial in $|x|$ and $1/\epsilon$. For what graphs G and $(x, y) \in \mathbb{R}^2$ does there exist an FPRAS to compute $T_G(x, y)$? Dominic’s student James Annan considered the case of dense graphs: for $\alpha > 0$, \mathcal{G}_α is the class of α -dense graphs $G = (V, E)$ satisfying $|E| \geq \alpha|V|$. With Noga Alon and Alan Frieze, Dominic showed in [6] the existence of an FPRAS when $x, y \geq 1$ for the class \mathcal{G}_α with $\alpha > 0$ (with a stronger conclusion when $\alpha > \frac{1}{2}$). Never lacking in bravery, Dominic has conjectured that the condition on α may be removed, but the jury is still out on that (see [9]).

One further conjecture of Dominic deserves mention. With his student Criel Merino he conjectured in [35] that the number of spanning trees of a graph is no greater than the maximum of the number of acyclic orientations and the number of totally cyclic orientations. This amounts to the inequality

$$T_G(1, 1) \leq \max\{T_G(2, 0), T_G(0, 2)\},$$

and this has been open since their 1999 paper.

In studying randomised algorithms, one encounters the problem of ascertaining the rate of convergence of associated Markov chains. Dominic was thus led to the problem of finding a way to simulate a random planar graph, and of identifying its properties. He initiated this project with Alain Denise and Marcio Vasconcelos in [10], and developed it further with Colin McDiarmid and Angelika Steger in [34]. The required techniques turn out to be largely

combinatorial and analytic, and it is fitting that one of Dominic’s projects in later life should be so close to the celebrated work [42] of Bill Tutte on map enumeration from the time of the former’s D.Phil. study.

ACKNOWLEDGEMENTS

The author thanks friends and colleagues who have kindly contributed to and commented on this memoir. He is grateful above all to Bridget Welsh for her kindnesses over many years, and for the wonderful conversations that have informed this account. Graham Farr, Dillon Mayhew, and James Oxley have kindly contributed through their very useful account [15] of Dominic’s life and work; thanks also to Graham for sharing the copy of Dominic’s D.Phil. thesis supplied by the Bodleian Library. The portrait of Dominic was taken by Bridget Welsh in 2006. Figure 8.1 was published on Wikipedia under the CC-BY-SA 3.0 licence. Han Kimmett of Merton College kindly advised on the details of Dominic’s association with Merton.

REFERENCES

- [1] *Publications of Dominic Welsh*, <https://www.statslab.cam.ac.uk/~grg/papers/welsh-bib.pdf>.
- [2] *St David’s Priory, a brief history*, <https://stdavidspriory.wordpress.com/stdavids-school/a-brief-history-2/>.
- [3] *Swansea professor’s maths victory*, <https://www.walesonline.co.uk/news/wales-news/swansea-professors-maths-victory-2122483>.
- [4] *Tribute to Professor Dominic Welsh, 1938–2023*, <https://professordominicwelsh.muchloved.com/>.
- [5] K. Adiprasito, J. Huh, and E. Katz, *Hodge theory for combinatorial geometries*, Ann. of Math. (2) **188** (2018), 381–452.
- [6] N. Alon, A. Frieze, and D. J. A. Welsh, *Polynomial time randomized approximation schemes for Tutte–Gröthendieck invariants: the dense case*, Random Struct. Alg. **6** (1995), 459–478.
- [7] N. Bansal, R. A. Pendavingh, and J. G. van der Pol, *On the number of matroids*, Combinatorica **35** (2015), 253–277.
- [8] N. L. Biggs, *British Combinatorics in ancient times (1969–77)*, <https://staff.computing.dundee.ac.uk/kedwards/bcc/ancient.html>.
- [9] M. Bordewich, *Approximating the Tutte polynomial*, Handbook of the Tutte Polynomial and Related Topics (J. A. Ellis-Monaghan and I. Moffatt, eds.), CRC Press, Boca Raton, FL, 2022, pp. 194–209.
- [10] A. Denise, M. Vasconcellos, and D. J. A. Welsh, *The random planar graph*, Congr. Numer. **113** (1996), 61–79.
- [11] H. Duminil-Copin, S. Ganguly, A. Hammond, and I. Manolescu, *Bounding the number of self-avoiding walks: Hammersley–Welsh with polygon insertion*, Ann. Probab. **48** (2020), 1644–1692.
- [12] H. Duminil-Copin and S. Smirnov, *The connective constant of the honeycomb lattice equals $\sqrt{2} + \sqrt{2}$* , Ann. of Math. (2) **175** (2012), 1653–1665.
- [13] J. A. Ellis-Monaghan and I. Moffatt (eds.), *Handbook of the Tutte Polynomial and Related Topics*, CRC Press, Boca Raton, FL, 2022.
- [14] G. Farr, *The history of Tutte–Whitney polynomials*, Handbook of the Tutte Polynomial and Related Topics (J. A. Ellis-Monaghan and I. Moffatt, eds.), CRC Press, Boca Raton, FL, 2022, pp. 623–668.

- [15] G. Farr, D. Mayhew, and J. Oxley, *Dominic Welsh: his work and influence*, The Matroid Union (2024), <http://matroidunion.org/?p=5304>.
- [16] P. Flory, *Principles of Polymer Chemistry*, Cornell Univ. Press, 1953.
- [17] M. R. Garey and D. S. Johnson, *Computers and Intractability*, W. H. Freeman and Co., San Francisco, CA, 1979.
- [18] G. R. Grimmett and C. J. H. McDiarmid (eds.), *Combinatorics, Complexity, and Chance, A Tribute to Dominic Welsh*, Oxford Univ. Press, Oxford, 2007.
- [19] G. R. Grimmett and D. J. A. Welsh, *Probability, an Introduction*, 2nd ed., Oxford Univ. Press, Oxford, 2014.
- [20] J. M. Hammersley and D. J. A. Welsh, *Further results on the rate of convergence to the connective constant of the hypercubical lattice*, Quart. J. Math. Oxford Ser. (2) **13** (1962), 108–110.
- [21] ———, *First-passage percolation, subadditive processes, stochastic networks, and generalized renewal theory*, Bernoulli. Bayes, Laplace Anniversary Volume, Springer, New York, 1965, pp. 61–110.
- [22] T. E. Harris, *A lower bound for the critical probability in a certain percolation process*, Proc. Cambridge Philos. Soc. **56** (1960), 13–20.
- [23] F. Jaeger, D. L. Vertigan, and D. J. A. Welsh, *On the computational complexity of the Jones and Tutte polynomials*, Math. Proc. Cambridge Philos. Soc. **108** (1990), 35–53.
- [24] G. Kalai, *The work of June Huh*, ICM—International Congress of Mathematicians. Vol. I. Prize lectures, EMS Press, Berlin, 2023, pp. 50–65.
- [25] H. Kesten, *The critical probability of bond percolation on the square lattice equals $\frac{1}{2}$* , Commun. Math. Phys. **74** (1980), 41–59.
- [26] J. F. C. Kingman, *Subadditive ergodic theory*, Ann. Probab. **1** (1973), 883–909.
- [27] ———, *Subadditive processes*, École d’Été de Probabilités de Saint-Flour, V-1975, Lecture Notes in Math., vol. 539, Springer, Berlin, 1976, pp. 167–223.
- [28] D. E. Knuth, *The asymptotic number of geometries*, J. Combin. Theory Ser. A **16** (1974), 398–400.
- [29] L. Köhler-Schindler and V. Tassion, *Crossing probabilities for planar percolation*, Duke Math. J. **172** (2023), 809–838.
- [30] T. M. Liggett, *An improved subadditive ergodic theorem*, Ann. Probab. **13** (1985), 1279–1285.
- [31] N. Madras and G. Slade, *The Self-Avoiding Walk*, Birkhäuser/Springer, New York, 2013.
- [32] A. J. Mansfield and D. J. A. Welsh, *Some colouring problems and their complexity*, Ann. Discrete Math. **13** (1982), 159–170.
- [33] J. H. Mason, *Matroids: unimodal conjectures and Motzkin’s theorem*, Combinatorics (Proc. Oxford Conf. Combinatorial Math.) (D. J. A. Welsh and D. R. Woodall, eds.), Inst. Math. Appl., Southend-on-Sea, 1972, pp. 207–220.
- [34] C. J. H. McDiarmid, A. Steger, and D. J. A. Welsh, *Random planar graphs*, J. Combin. Theory Ser. B **93** (2005), 187–205.
- [35] C. Merino and D. J. A. Welsh, *Forests, colorings and acyclic orientations of the square lattice*, Ann. Comb. **3** (1999), 417–429.
- [36] J. Nešetřil, E. Milková, and H. Nešetřilová, *Otakar Borůvka on minimum spanning tree problem: translation of both the 1926 papers, comments, history*, Discrete Math. **233** (2001), 3–36.
- [37] J. Oxley, *The contributions of Dominic Welsh to matroid theory*, Combinatorics, Complexity, and Chance (G. R. Grimmett and C. J. H. McDiarmid, eds.), Oxford Univ. Press, Oxford, 2007, pp. 234–259.
- [38] ———, *Matroid Theory*, 2nd ed., Oxford Univ. Press, Oxford, 2011.
- [39] L. Russo, *A note on percolation*, Z. Wahrsch. theorie und Verw. Gebiete **43** (1978), 39–48.

- [40] P. D. Seymour and D. J. A. Welsh, *Percolation probabilities on the square lattice*, Ann. Discrete Math. **3** (1978), 227–245.
- [41] J. Talbot and D. J. A. Welsh, *Complexity and Cryptography: an Introduction*, Cambridge Univ. Press, Cambridge, 2006.
- [42] W. T. Tutte, *A census of planar maps*, Canadian J. Math. **15** (1963), 249–271.
- [43] D. J. A. Welsh, *Topics in Stochastic Processes with special reference to First Passage Percolation Theory*, D.Phil. Thesis, University of Oxford, 131 pp., 1964.
- [44] D. J. A. Welsh, *Matroid Theory*, London Math. Soc. Monographs, vol. 8, Academic Press, London, 1976.
- [45] ———, *Codes and Cryptography*, Clarendon Press, Oxford, 1988.
- [46] ———, *Complexity: Knots, Colourings and Counting*, London Math. Soc. Lect. Note Ser., vol. 186, Cambridge Univ. Press, Cambridge, 1993.
- [47] D. J. A. Welsh and M. B. Powell, *An upper bound for the chromatic number of a graph and its application to timetabling problems*, The Computer Journal **10** (1967), 85–86.
- [48] H. Whitney, *On the abstract properties of linear dependence*, Amer. J. Math. **57** (1935), 509–533.
- [49] D. Wood, *The academic family tree of Dominic Welsh (1938–2023)*, <https://users.monash.edu.au/~davidwo/history.html>.

PUBLICATIONS OF DOMINIC WELSH

1962

- [1] J. M. Hammersley and D. J. A. Welsh. Further results on the rate of convergence to the connective constant of the hypercubical lattice. *Quart. J. Math. Oxford Ser. (2)*, 13:108–110, 1962.

1964

- [2] D. J. A. Welsh. *Topics in Stochastic Processes with special reference to First Passage Percolation Theory*. D.Phil. Thesis, University of Oxford, 1964, 131 pp.

1965

- [3] J. M. Hammersley and D. J. A. Welsh. First-passage percolation, subadditive processes, stochastic networks, and generalized renewal theory. In *Bernoulli, Bayes, Laplace Anniversary Volume*, pages 61–110. Springer, New York, 1965.
- [4] R. W. Morgan and D. J. A. Welsh. A two-dimensional Poisson growth process. *J. Roy. Statist. Soc. Ser. B*, 27:497–504, 1965.
- [5] D. J. A. Welsh. Letter to the Editor: Errors introduced by a PERT assumption. *Operat. Res.*, 13:141–143, 1965.

1966

- [6] D. J. A. Welsh. Letter to the Editor: Super-critical arcs of a PERT network. *Operat. Res.* 14:173–174, 1966.
- [7] J. A. Bondy and D. J. A. Welsh. A note on the monomer dimer problem. *Proc. Cambridge Philos. Soc.*, 62:503–505, 1966.

1967

- [8] D. J. A. Welsh. On dependence in matroids. *Canad. Math. Bull.*, 10:599–603, 1967.
- [9] D. J. A. Welsh and M. B. Powell. An upper bound for the chromatic number of a graph and its application to timetabling problems. *The Computer J.*, 10:85–86, 1967.

1968

- [10] D. J. A. Welsh. Some applications of a theorem of Rado. *Mathematika*, 15:199–203, 1968.
- [11] D. J. A. Welsh. Kruskal’s theorem for matroids. *Proc. Cambridge Philos. Soc.*, 64:3–4, 1968.

1969

- [12] F. Harary and D. J. A. Welsh. Matroids versus graphs. In *The Many Facets of Graph Theory (Proc. Conf., Western Mich. Univ., Kalamazoo, Mich., 1968)*, Lecture Notes in Math., volume 110, pages 155–170. Springer, New York, 1969.
- [13] D. J. A. Welsh. Transversal theory and matroids. *Canadian J. Math.*, 21:1323–1330, 1969.
- [14] D. J. A. Welsh. A bound for the number of matroids. *J. Combin. Theory*, 6:313–316, 1969.
- [15] D. J. A. Welsh. Euler and bipartite matroids. *J. Combin. Theory*, 6:375–377, 1969.
- [16] D. J. A. Welsh. On the hyperplanes of a matroid. *Proc. Cambridge Philos. Soc.*, 65:11–18, 1969.

1970

- [17] B. Manvel, P. K. Stockmeyer, and D. J. A. Welsh. On removing a point of a digraph. *Studia Sci. Math. Hungar.*, 5:299–301, 1970.
- [18] D. J. A. Welsh. Probability theory and its applications. In *Mathematics Applied to Physics*, pages 465–561. Springer, New York, 1970.
- [19] D. J. A. Welsh. On matroid theorems of Edmonds and Rado. *J. London Math. Soc. (2)*, 2:251–256, 1970.

- [20] M. J. Piff and D. J. A. Welsh. On the vector representation of matroids. *J. London Math. Soc. (2)*, 2:284–288, 1970.

1971

- [21] D. J. A. Welsh. Matroids and block designs. In *Théorie des Matroïdes (Rencontre Franco-Britannique, Brest, 1970)*, Lecture Notes in Math., volume 211, pages 95–106. Springer, Berlin, 1971.
- [22] D. J. A. Welsh. Related classes of set functions. In *Studies in Pure Mathematics (Presented to Richard Rado)*, pages 261–269. Academic Press, London, 1971.
- [23] J. A. Bondy and D. J. A. Welsh. Some results on transversal matroids and constructions for identically self-dual matroids. *Quart. J. Math. Oxford Ser. (2)*, 22:435–451, 1971.
- [24] D. J. A. Welsh. Generalized versions of Hall’s theorem. *J. Combin. Theory Ser. B*, 10:95–101, 1971.
- [25] M. J. Piff and D. J. A. Welsh. The number of combinatorial geometries. *Bull. London Math. Soc.*, 3:55–56, 1971.
- [26] D. J. A. Welsh (ed.). *Combinatorial Mathematics and its Applications (Proc. Conf., Oxford, 1969)*. Academic Press, London, 1971.
- [27] D. J. A. Welsh. Combinatorial problems in matroid theory. In *Combinatorial Mathematics and its Applications (Proc. Conf., Oxford, 1969)*, pages 291–306. Academic Press, London, 1971.

1972

- [28] F. D. J. Dunstan, A. W. Ingleton, and D. J. A. Welsh. Supermatroids. In *Combinatorics (Proc. Conf., Oxford, 1972)*, pages 72–122. Inst. Math. Appl., Southend-on-Sea, 1972.
- [29] J. de Sousa and D. J. A. Welsh. A characterisation of binary transversal structures. *J. Math. Anal. Appl.*, 40:55–59, 1972.
- [30] F. Harary, M. J. Piff, and D. J. A. Welsh. On the automorphism group of a matroid. *Discrete Math.*, 2:163–171, 1972.
- [31] D. J. A. Welsh and D. R. Woodall (eds.). *Combinatorics (Proc. Conf., Oxford, 1972)*. Institute of Mathematics and its Applications, Southend-on-Sea, 1972.

1973

- [32] F. D. J. Dunstan and D. J. A. Welsh. A greedy algorithm for solving a certain class of linear programmes. *Math. Programming*, 5:338–353, 1973.

1975

- [33] R. A. Main and D. J. A. Welsh. A note on matroids and block designs. *J. Austral. Math. Soc.*, 20:54–58, 1975.
- [34] P. D. Seymour and D. J. A. Welsh. Combinatorial applications of an inequality from statistical mechanics. *Math. Proc. Cambridge Philos. Soc.*, 77:485–495, 1975.

1976

- [35] E. C. Milner and D. J. A. Welsh. On the computational complexity of graph theoretical properties. In *Proceedings of the Fifth British Combinatorial Conference (Univ. Aberdeen, Aberdeen, 1975)*, Congress. Numer., volume XV, pages 471–487, 1976.
- [36] D. J. A. Welsh. *Matroid Theory*. Lond. Math. Soc. Monographs, volume 8, Academic Press, London, 1976.

1978

- [37] P. D. Seymour and D. J. A. Welsh. Percolation probabilities on the square lattice. *Ann. Discrete Math.*, 3:227–245, 1978.

1979

- [38] D. J. A. Welsh. Colouring problems and matroids. In *Surveys in Combinatorics (Proc. Seventh British Combinatorial Conf., Cambridge, 1979)*, London Math. Soc. Lecture Note Ser., volume 38, pages 229–257. Cambridge Univ. Press, Cambridge, 1979.
- [39] J. G. Oxley and D. J. A. Welsh. On some percolation results of J. M. Hammersley. *J. Appl. Probab.*, 16:526–540, 1979.
- [40] J. G. Oxley and D. J. A. Welsh. The Tutte polynomial and percolation. In *Graph Theory and Related Topics (Proc. Conf., Univ. Waterloo, Waterloo, Ont., 1977)*, pages 329–339. Academic Press, New York-London, 1979.

1980

- [41] D. J. A. Welsh. Colourings, flows and projective geometry. *Nieuw Arch. Wisk. (3)*, 28:159–176, 1980.
- [42] P. N. Walton and D. J. A. Welsh. On the chromatic number of binary matroids. *Mathematika*, 27:1–9, 1980.
- [43] G. C. Robinson and D. J. A. Welsh. The computational complexity of matroid properties. *Math. Proc. Cambridge Philos. Soc.*, 87:29–45, 1980.

1981

- [44] B. M. I. Rands and D. J. A. Welsh. Animals, trees and renewal sequences. *IMA J. Appl. Math.*, 27:1–17, 1981.

1982

- [45] D. J. A. Welsh. Matroids and combinatorial optimisation. In *Matroid Theory and its Applications*, pages 323–416. Liguori, Naples, 1982.
- [46] D. J. A. Welsh. Problems in computational complexity. *Shiva Math. Ser.*, 6:75–85, 1982.
- [47] P. N. Walton and D. J. A. Welsh. Tangential 1-blocks over $\text{GF}(3)$. *Discrete Math.*, 40:319–320, 1982.
- [48] A. J. Mansfield and D. J. A. Welsh. Some colouring problems and their complexity. *Ann. Discrete Math.*, 13:159–170, 1982.
- [49] G. R. Grimmett and D. J. A. Welsh. Flow in networks with random capacities. *Stochastics*, 7:205–229, 1982.
- [50] B. M. I. Rands and D. J. A. Welsh. Corrigendum: “Animals, trees and renewal sequences” [IMA J. Appl. Math. 27:1–17, 1981]. *IMA J. Appl. Math.*, 28:107, 1982.

1983

- [51] P. J. Donnelly and D. J. A. Welsh. Finite particle systems and infection models. *Math. Proc. Cambridge Philos. Soc.*, 94:167–182, 1983.
- [52] D. J. A. Welsh. Randomised algorithms. *Discrete Appl. Math.*, 5:133–145, 1983.

1984

- [53] P. J. Donnelly and D. J. A. Welsh. The antivoter problem: random 2-colourings of graphs. In *Graph Theory and Combinatorics (Cambridge, 1983)*, pages 133–144. Academic Press, London, 1984.

1986

- [54] D. J. A. Welsh. Correlated percolation and repulsive particle systems. In *Stochastic Spatial Processes (Heidelberg, 1984)*, Lecture Notes in Math., volume 1212, pages 300–311. Springer, Berlin, 1986.
- [55] G. R. Grimmett and D. J. A. Welsh. *Probability, an Introduction*. Clarendon Press, Oxford, 1986.

1988

- [56] D. J. A. Welsh. Matroids and their applications. In *Selected Topics in Graph Theory*, 3, pages 43–70. Academic Press, San Diego, CA, 1988.
- [57] D. J. A. Welsh. *Codes and Cryptography*. Clarendon Press, Oxford, 1988.

1989

- [58] A. D. Petford and D. J. A. Welsh. A randomised 3-colouring algorithm. *Discrete Math.*, 74: 253–261, 1989.

1990

- [59] G. R. Grimmett and D. J. A. Welsh (eds.). *Disorder in Physical Systems, A Volume in Honour of J. M. Hammersley*. Clarendon Press, Oxford, 1990.
- [60] D. J. A. Welsh. The computational complexity of some classical problems from statistical physics. In *Disorder in Physical Systems, A Volume in Honour of J. M. Hammersley*, pages 307–321. Clarendon Press, Oxford, 1990.
- [61] F. Jaeger, D. L. Vertigan, and D. J. A. Welsh. On the computational complexity of the Jones and Tutte polynomials. *Math. Proc. Cambridge Philos. Soc.*, 108:35–53, 1990.

1991

- [62] D. J. A. Welsh. Colouring and knot polynomials. In *Recent Developments and Applications in Mathematics and Computer Science (Trieste, 1990)*, pages 112–131. World Sci. Publ., River Edge, NJ, 1991.

1992

- [63] D. J. A. Welsh. On the number of knots and links. In *Sets, Graphs and Numbers (Budapest, 1991)*, Colloq. Math. Soc. János Bolyai, volume 60, pages 713–718. North-Holland, Amsterdam, 1992.
- [64] J. G. Oxley and D. J. A. Welsh. Tutte polynomials computable in polynomial time. *Discrete Math.*, 109:185–192, 1992.
- [65] D. L. Vertigan and D. J. A. Welsh. The computational complexity of the Tutte plane: the bipartite case. *Combin. Probab. Comput.*, 1:181–187, 1992.

1993

- [66] D. J. A. Welsh. *Complexity: Knots, Colourings and Counting*. London Math. Soc. Lecture Note Series, volume 186. Cambridge Univ. Press, Cambridge, 1993.
- [67] D. J. A. Welsh. Percolation in the random cluster process and Q -state Potts model. *J. Phys. A*, 26:2471–2483, 1993.
- [68] D. J. A. Welsh. Knots and braids: some algorithmic questions. In *Graph Structure Theory (Seattle, WA, 1991)*, Contemp. Math., volume 147, pages 109–123. Amer. Math. Soc., Providence, RI, 1993.
- [69] D. J. A. Welsh. The complexity of knots. *Ann. Discrete Math.*, 55:159–171, 1993.
- [70] W. Schwärzler and D. J. A. Welsh. Knots, matroids and the Ising model. *Math. Proc. Cambridge Philos. Soc.*, 113:107–139, 1993.

1994

- [71] D. J. A. Welsh. The computational complexity of knot and matroid polynomials. *Discrete Math.*, 124:251–269, 1994.
- [72] N. Alon, A. Frieze, and D. J. A. Welsh. Polynomial time randomised approximation schemes for the Tutte polynomial of dense graphs. In *35th Annual Symposium on Foundations of Computer Science (Santa Fe, NM, 1994)*, pages 24–35. IEEE Comput. Soc. Press, Los Alamitos, CA, 1994.
- [73] D. J. A. Welsh. Random generation of polymer configurations. In *Probability, Statistics and Optimisation*, pages 65–77. Wiley, Chichester, 1994.
- [74] D. J. A. Welsh. The random cluster process. *Discrete Math.*, 136:373–390, 1994.
- [75] D. J. A. Welsh. Randomised approximation in the Tutte plane. *Combin. Probab. Comput.*, 3:137–143, 1994.

1995

- [76] D. J. A. Welsh. Randomised approximation schemes for Tutte-Gröthendieck invariants. In *Discrete Probability and Algorithms (Minneapolis, MN, 1993)*, IMA Vol. Math. Appl., volume 72, pages 133–148. Springer, New York, 1995.
- [77] L. Lovász, L. Pyber, D. J. A. Welsh, and G. M. Ziegler. Combinatorics in pure mathematics. In *Handbook of Combinatorics, Vol. 1, 2*, pages 2039–2082. Elsevier, Amsterdam, 1995.
- [78] C. D. Godsil, M. Grötschel, and D. J. A. Welsh. Combinatorics in statistical physics. In *Handbook of Combinatorics, Vol. 1, 2*, pages 1925–1954. Elsevier, Amsterdam, 1995.
- [79] D. J. A. Welsh. Matroids: fundamental concepts. In *Handbook of Combinatorics, Vol. 1, 2*, pages 481–526. Elsevier, Amsterdam, 1995.
- [80] N. Alon, A. Frieze, and D. J. A. Welsh. Polynomial time randomized approximation schemes for Tutte-Gröthendieck invariants: the dense case. *Random Structures Algorithms*, 6:459–478, 1995.
- [81] J. E. Bartels and D. J. A. Welsh. The Markov chain of colourings. In *Integer Programming and Combinatorial Optimization (Copenhagen, 1995)*, Lecture Notes in Comput. Sci., volume 920, pages 373–387. Springer, Berlin, 1995.

1996

- [82] L. Chávez Lomelí and D. J. A. Welsh. Randomised approximation of the number of bases. In *Matroid Theory (Seattle, WA, 1995)*, Contemp. Math., volume 197, pages 371–376. Amer. Math. Soc., Providence, RI, 1996.
- [83] D. J. A. Welsh. Counting colourings and flows in random graphs. In *Combinatorics, Paul Erdős is Eighty, Vol. 2 (Keszthely, 1993)*, Bolyai Soc. Math. Stud., volume 2, pages 491–505. János Bolyai Math. Soc., Budapest, 1996.
- [84] A. Denise, M. Vasconcellos, and D. J. A. Welsh. The random planar graph. *Congr. Math.*, 113:61–79. 1996 (Festschrift for C. St. J. A. Nash-Williams).

1997

- [85] D. J. A. Welsh. Knots. In *Graph Connections*, Oxford Lecture Ser. Math. Appl., volume 5, pages 176–193. Oxford Univ. Press, Oxford, 1997.
- [86] D. J. A. Welsh. Approximate counting. In *Surveys in Combinatorics, 1997 (London)*, London Math. Soc. Lecture Note Ser., volume 241, pages 287–323. Cambridge Univ. Press, Cambridge, 1997.
- [87] D. J. A. Welsh. Randomised approximation in the Tutte plane. In *Combinatorics, Geometry and Probability (Cambridge, 1993)*, pages 549–555. Cambridge Univ. Press, Cambridge, 1997.
- [88] J. E. Bartels, J. Mount, and D. J. A. Welsh. The polytope of win vectors. *Ann. Comb.*, 1:1–15, 1997.
- [89] D. B. Massey, R. Simion, R. P. Stanley, D. Vertigan, D. J. A. Welsh, and G. M. Ziegler. Lê numbers of arrangements and matroid identities. *J. Combin. Theory Ser. B*, 70:118–133, 1997.

1998

- [90] D. J. A. Welsh. Percolation and the random cluster model: combinatorial and algorithmic problems. *Algorithms Combin.*, 16:166–194, 1998.

1999

- [91] C. Merino and D. J. A. Welsh. Forests, colorings and acyclic orientations of the square lattice. *Ann. Comb.*, 3:417–429. 1999.
- [92] D. J. A. Welsh and G. P. Whittle. Arrangements, channel assignments, and associated polynomials. *Adv. in Appl. Math.*, 23:375–406, 1999.
- [93] D. J. A. Welsh. The Tutte polynomial. *Random Struct. Alg.*, 15:210–228. 1999.

- [94] S. D. Noble and D. J. A. Welsh. A weighted graph polynomial from chromatic invariants of knots. *Ann. Inst. Fourier (Grenoble)*, 49:1057–1087, 1999.
2000
- [95] D. J. A. Welsh and C. Merino. The Potts model and the Tutte polynomial. *J. Math. Phys.*, 41:1127–1152, 2000.
- [96] S. D. Noble and D. J. A. Welsh. Knot graphs. *J. Graph Theory*, 34:100–111, 2000.
2001
- [97] D. J. A. Welsh and A. Gale. The complexity of counting problems. In *Aspects of Complexity (Kaikoura, 2000)*, De Gruyter Ser. Log. Appl., volume 4, pages 115–153. De Gruyter, Berlin, 2001.
2002
- [98] J. G. Oxley and D. J. A. Welsh. Chromatic, flow and reliability polynomials: the complexity of their coefficients. *Combin. Probab. Comput.*, 11:403–426, 2002.
- [99] A. J. Goodall and D. J. A. Welsh. On the parity of colourings and flows. *J. Combin. Theory Ser. B*, 84:364–365, 2002.
2003
- [100] D. J. A. Welsh. Crispin St. J. A. Nash-Williams (1932–2001). *Bull. London Math. Soc.*, 35:829–844, 2003.
2004
- [101] D. J. A. Welsh and K. K. Kayibi. A linking polynomial of two matroids. *Adv. in Appl. Math.*, 32:391–419, 2004.
- [102] D. J. A. Welsh. W. T. (Bill) Tutte—in memoriam. *Adv. in Appl. Math.*, 32:3–4, 2004.
2005
- [103] M. Bordewich, M. Freedman, L. Lovász, and D. J. A. Welsh. Approximate counting and quantum computation. *Combin. Probab. Comput.*, 14:737–754, 2005.
- [104] C. J. H. McDiarmid, A. Steger, and D. J. A. Welsh. Random planar graphs. *J. Combin. Theory Ser. B*, 93:187–205, 2005.
2006
- [105] C. J. H. McDiarmid, A. Steger, and D. J. A. Welsh. Random graphs from planar and other addable classes. *Algorithms Combin.*, 26:231–246, 2006.
- [106] J. Talbot and D. J. A. Welsh. *Complexity and Cryptography*. Cambridge Univ. Press, Cambridge, 2006.
2007
- [107] G. R. Grimmett and D. J. A. Welsh. John Michael Hammersley, 21 March 1920–2 May 2004. *Biogr. Mem. Fell. R. Soc.*, 53:163–183, 2007. Reprinted in *Bull. London Math. Soc.*, 41(6):1125–1143, 2009.
2008
- [108] C. Semple and D. J. A. Welsh. Negative correlation in graphs and matroids. *Combin. Probab. Comput.*, 17:423–435, 2008.
2009
- [109] D. J. A. Welsh. Some problems on approximate counting in graphs and matroids. In *Research Trends in Combinatorial Optimization*, pages 523–544. Springer, Berlin, 2009.
2010
- [110] D. J. A. Welsh. Matroids and combinatorial optimisation. In *Matroid Theory and its Applications*, C.I.M.E. Summer Sch., volume 83, pages 323–416. Springer, Heidelberg, 2010.

- [111] O. Bernardi, M. Noy, and D. J. A. Welsh. Growth constants of minor-closed classes of graphs. *J. Combin. Theory Ser. B*, 100:468–484, 2010.
2011
- [112] D. Mayhew, M. Newman, D. J. A. Welsh, and G. Whittle. On the asymptotic proportion of connected matroids. *European J. Combin.*, 32:882–890, 2011.
- [113] B. Faller, C. Semple, and D. J. A. Welsh. Optimizing phylogenetic diversity with ecological constraints. *Ann. Comb.*, 15:255–266, 2011.
2012
- [114] D. J. A. Welsh and K. K. Kayibi. Corrigendum to “A linking polynomial of two matroids” [Adv. in Appl. Math. 32:391–419, 2004]. *Adv. in Appl. Math.*, 49:78–79, 2012.
2013
- [115] D. Mayhew and D. J. A. Welsh. On the number of sparse paving matroids. *Adv. in Appl. Math.*, 50:125–131, 2013.
- [116] L. Lowrance, J. G. Oxley, C. Semple, and D. J. A. Welsh. On properties of almost all matroids. *Adv. in Appl. Math.*, 50:115–124, 2013.
2014
- [117] G. R. Grimmett and D. J. A. Welsh. *Probability, an Introduction*. Oxford Univ. Press, Oxford, 2nd edition, 2014.
2015
- [118] C. J. H. McDiarmid, C. Semple, and D. J. A. Welsh. Counting phylogenetic networks. *Ann. Comb.*, 19:205–224, 2015.
- [119] C. Semple, D. J. A. Welsh, and G. Whittle. Special issue in honour of James Oxley. *Ann. Comb.*, 19:1–5, 2015.

STATISTICAL LABORATORY, CENTRE FOR MATHEMATICAL SCIENCES, CAMBRIDGE UNIVERSITY, WILBERFORCE ROAD, CAMBRIDGE CB3 0WB, UK

Email address: grg@statslab.cam.ac.uk

URL: <http://www.statslab.cam.ac.uk/~grg/>